

# Industrial maintenance

Contact : Mr Moulai

## Agri-food & general industry

Armitec specializes in **mechanical, electrical and piping industrial maintenance**.

We are at your disposal to offer you repair and implementation solutions based on your specifications or diagnostics carried out on site.

Our site managers are your preferred contacts on site and coordinate **teams of maintenance technicians and qualified fitters**.

We have the technical means (tools and materials) necessary to carry out all your maintenance and industrial assistance projects.

Our vehicles are equipped, and our technicians are autonomous.

In all its areas of expertise, Armitec adapts to the demands of its customers and knows how to be responsive for all interventions.



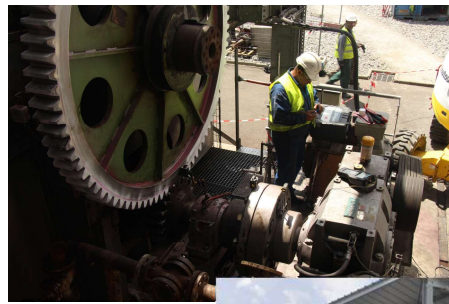
Thanks to the complementarity of all our services, we can also create new tailor-made tools and work projects, to improve your working conditions and meet your needs.



Design office, manufacturing, assembly and installation on site: a single company supports you from A to Z for greater responsiveness and fluidity.

## Our services

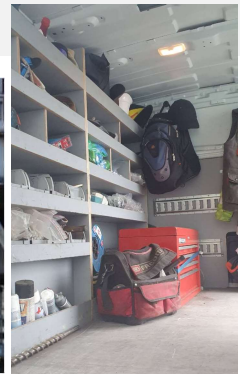
- Dismantling, reassembly and development of revised mechanical systems
- Technical expertise and on-site diagnostics
- Factory technical shutdown and transfer of means of production
- Preventive and corrective maintenance on site
- Installation and startup assistance
- Technical assistance, one-off interventions or maintenance contracts
- Laser alignment control
- Production of spare machined parts and sub-assemblies
- Assembly of new equipment
- Piping work (new and renovation)



## Minimize downtime of your production tool with on-site machining

- Bore 62 to 800 mm
- Front dressing
- Solder cladding
- Custom nitrogen shrinking
- Advancement and automatic reloading

We work with an **ELSA boring machine Supercominata SC3**



The certifications obtained in the areas of security (MASE from 2008 to 2019, then ISO 45001 since 2019) guarantee you services provided while respecting security.

We work on site with technicians trained in safety: ATEX - SEI 1 and SEI 2 - SST - Electrical authorizations - Bridge operator and slinger authorization - CACES trolley - CACES PEMP 3A/3B - CACES Cat 9 construction machinery - Work at height and wearing a harness - Scaffolding reception



Z.A. Estuaire Sud – 4 Rue du Camp d'Aviation- 44320 Saint-Viaud

Tél. 02 40 39 67 40 - contact@armitec.fr - [www.armitec.fr](http://www.armitec.fr)